



Flight Plan & Site Survey

Created using **RPAS Wilco**[®]

Operation Name:	Regina Windy Fliers Southland Mall
Pilot Name:	
Pilot Certificate:	
Flight Start:	January 16, 2024 7:40 PM
Flight End:	January 16, 2024 9:40 PM
Flight Area (Latitude):	50° 24' 10.10" N (50.403)
Flight Area (Longitude):	104° 37' 20.20" W (-104.622)
Altitude - Radius:	Alt: 699 ft - Rad: 926.0 m (0.5 nm)
Airspace:	CONTROLLED
FIR - Contact:	CZWG - 204-983-8338

Please ensure you received all required authorizations prior to flight.

Disclaimer

This Site Survey was created using RPAS Wilco by AIM Robotics. The flight plan contained is intended only for RPAS flights on the date/time and location specified. The user accepts all responsibility for the accuracy and completeness of the information contained.

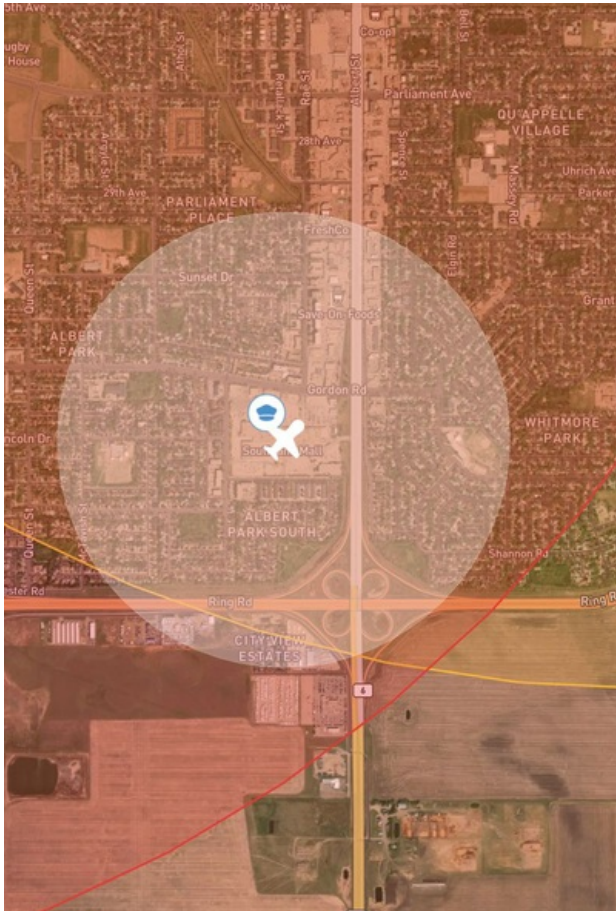
For the complete Terms & Conditions, see

<https://rpswilco.com/#/tnc>



Included

- Site Survey
- Obstacles (if available)
- Nearby Aerodromes
- Canadian Aviation Regulations
- GFA
- Aerodrome Supplements
 - METAR & TAF (if available)
 - NOTAMS
 - CFS

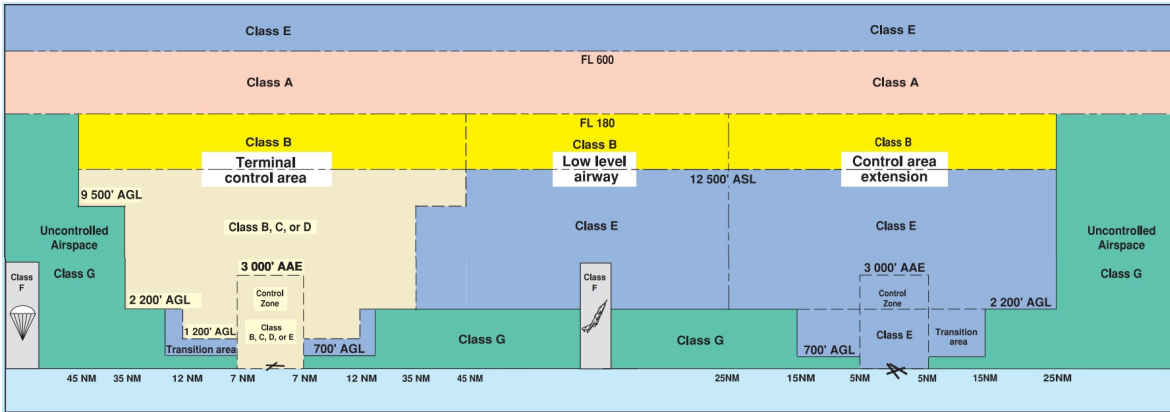
Flight Map



MAP Details

	Latitude	Longitude
 MODEL	50° 24' 10.10" N (50.403)	104° 37' 20.20" W (-104.622)
 Pilot	50° 24' 13.70" N (50.4038)	104° 37' 23.80" W (-104.6233)

Airspace Classification



Overlying Airspaces

Class	Name	Floor	Ceiling
D	Regina Intl CZ	SFC	5000MSL
E	Regina, SK TA XPNDR MANDTRY	3000MSL	12500MSL
B	T678 Airway	12500MSL	18000MSL
E	T678 Airway	2200AGL	12500MSL
E	T706 Airway	2200AGL	12500MSL
B	T706 Airway	12500MSL	18000MSL
E	Regina, SK CAE XPNDR MANDTRY	4000MSL	12500MSL
B	Regina, SK CAE XPNDR MANDTRY	12500MSL	18000MSL

Nearest Aerodromes & Distance from Operation

REGINA INTL (CYQR - AERODROME - Cert)	Lat: 50.432	Long: -104.666	4.487 KM	2.42 NM
REGINA GENERAL (HOSP) (CRQ2 - HELIPOINT - Cert)	Lat: 50.444	Long: -104.601	4.822 KM	2.6 NM
PILOT BUTTE (CPB5 - AERODROME - Reg)	Lat: 50.461	Long: -104.431	15.014 KM	8.11 NM
AEROGATE (CAG2 - AERODROME - Reg)	Lat: 50.598	Long: -104.601	21.757 KM	11.75 NM

Canadian Aviation Regulations

Division III — General Operating and Flight Rules

For full listing please visit : <https://laws-lois.justice.gc.ca/eng/regulations/SOR-96-433/FullText.html#s-901.27>

Visual Line-of-sight

- **901.11 (1)** Subject to subsection (2), no pilot shall operate a remotely piloted aircraft system unless the pilot or a visual observer has the aircraft in visual line-of-sight at all times during flight.
- **(2)** A pilot may operate a remotely piloted aircraft system without the pilot or a visual observer having the aircraft in visual line-of-sight if the operation is conducted in accordance with a special flight operations certificate — RPAS issued under section 903.03.

Procedures

- **901.23 (1)** No pilot shall operate a remotely piloted aircraft system unless the following procedures are established:
 - **(a)** normal operating procedures, including pre-flight, take-off, launch, approach, landing and recovery procedures; and
 - **(b)** emergency procedures, including with respect to
 - **(i)** a control station failure,
 - **(ii)** an equipment failure,
 - **(iii)** a failure of the remotely piloted aircraft,
 - **(iv)** a loss of the command and control link,
 - **(v)** a fly-away, and
 - **(vi)** flight termination.
- **(2)** If the manufacturer of the remotely piloted aircraft system provides instructions with respect to the topics referred to in paragraphs (1)(a) and (b), the procedures established under subsection (1) shall reflect those instructions.
- **(3)** No pilot shall conduct the take-off or launch of a remotely piloted aircraft unless the procedures referred to in subsection (1) are reviewed before the flight by, and are immediately available to, each crew member.
- **(4)** No pilot shall operate a remotely piloted aircraft system unless the operation is conducted in accordance with the procedures referred to in subsection (1).

Site Survey

901.27 No pilot shall operate a remotely piloted aircraft system unless, before commencing operations, they determine that the site for take-off, launch, landing or recovery is suitable for the proposed operation by conducting a site survey that takes into account the following factors:

- **(a)** the boundaries of the area of operation;
- **(b)** the type of airspace and the applicable regulatory requirements;
- **(c)** the altitudes and routes to be used on the approach to and departure from the area of operation;
- **(d)** the proximity of manned aircraft operations;
- **(e)** the proximity of aerodromes, airports and heliports;
- **(f)** the location and height of obstacles, including wires, masts, buildings, cell phone towers and wind turbines;
- **(g)** the predominant weather and environmental conditions for the area of operation; and
- **(h)** the horizontal distances from persons not involved in the operation.

Operations at or in the Vicinity of an Aerodrome, Airport or Heliport

- **901.47 (1)** No pilot shall operate a remotely piloted aircraft at or near an aerodrome that is listed in the *Canada Flight Supplement* or the *Water Aerodrome Supplement* in a manner that could interfere with an aircraft operating in the established traffic pattern.
- **(2)** Subject to section 901.73, no pilot shall operate a remotely piloted aircraft at a distance of less than
 - **(a)** three nautical miles from the centre of an airport; and
 - **(b)** one nautical mile from the centre of a heliport.
- **(3)** No pilot shall operate a remotely piloted aircraft at a distance of less than three nautical miles from the centre of an aerodrome operated under the authority of the Minister of National Defence unless the operation is conducted in accordance with a special flight operations certificate — RPAS issued under section 903.03.

Records

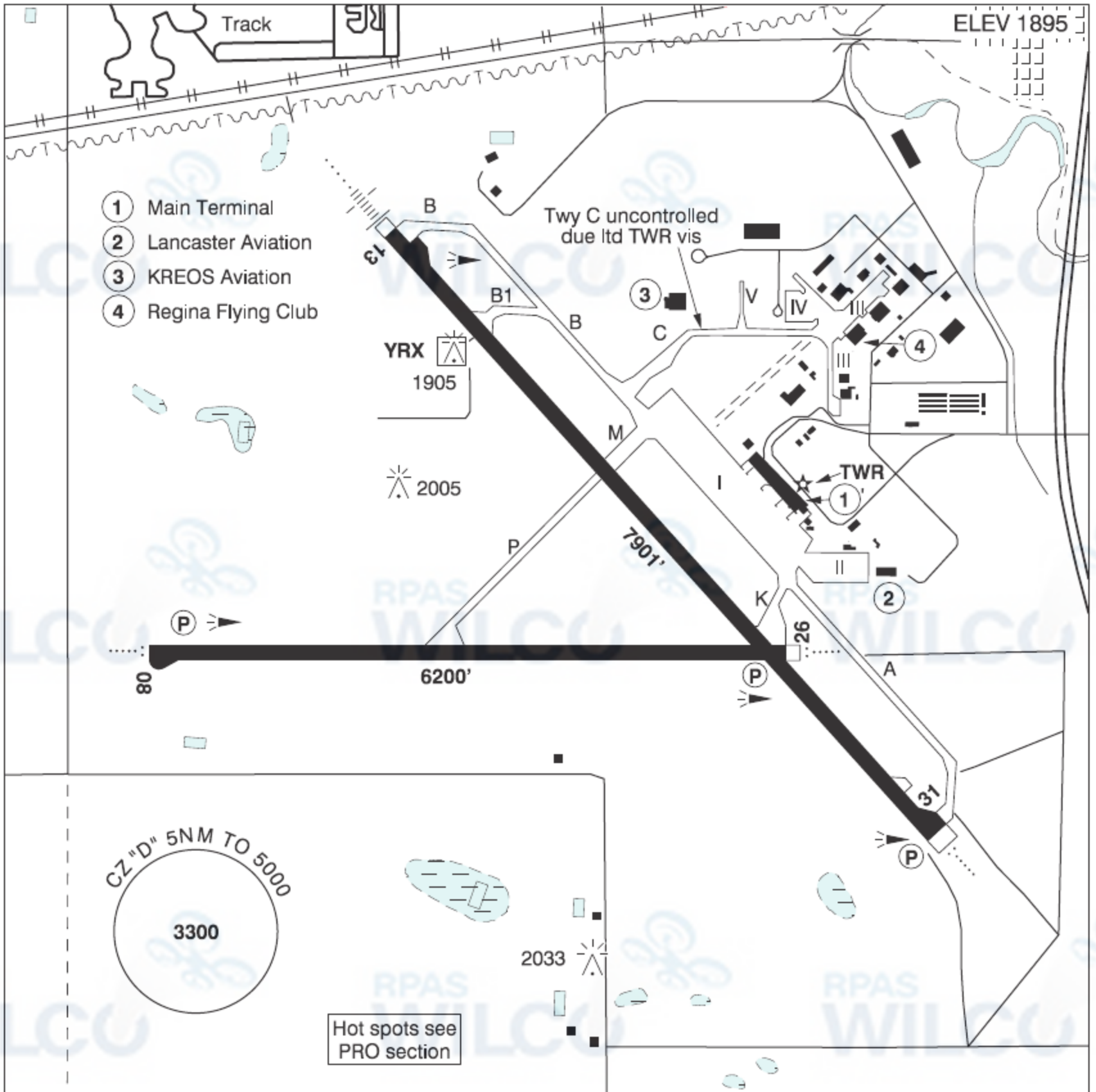
- **901.48 (1)** Every owner of a remotely piloted aircraft system shall keep the following records:
 - **(a)** a record containing the names of the pilots and other crew members who are involved in each flight and, in respect of the system, the time of each flight or series of flights; and
 - **(b)** a record containing the particulars of any mandatory action and any other maintenance action, modification or repair performed on the system, including
 - **(i)** the names of the persons who performed them,
 - **(ii)** the dates they were undertaken,
 - **(iii)** in the case of a modification, the manufacturer, model and a description of the part or equipment installed to modify the system, and
 - **(iv)** if applicable, any instructions provided to complete the work.
- **(2)** Every owner of a remotely piloted aircraft system shall ensure that the records referred to in subsection (1) are made available to the Minister on request and are retained for a period of
 - **(a)** in the case of the records referred to in paragraph (1)(a), 12 months after the day on which they are created; and
 - **(b)** in the case of the records referred to in paragraph (1)(b), 24 months after the day on which they are created.
- **(3)** Every owner of a remotely piloted aircraft system who transfers ownership of the system to another person shall, at the time of transfer, also deliver to that person all of the records referred to in paragraph (1)(b).

SASKATCHEWAN

AERODROME/FACILITY DIRECTORY

REGINA INTL SK

CYQR



REF	N50 25 56 W104 39 58 2SW 10°E (2011) UTC-6 Elev 1895' A5006 LO2 HI4 T1 CAP OC
OPR	Regina Aprt Authority (RAA) 306-761-7550 H24 Cert
PF	A-1,2,3,6,7 Tml opr 12-05Z C-4,5
CUST	AOE/200 (300 with staged off-loading) 888-226-7277 14-06Z May 3-Nov 6, H24 Nov 7-May 2
FLT PLN	FIG Edmonton 866-WXBRIEF (Toll free within Canada) or 866-541-4102 (Toll free within Canada & USA) WX METAR H24. TAF H24, issue times: 00, 06, 12, 18Z.

SASKATCHEWAN

AERODROME/FACILITY DIRECTORY

REGINA INTL SK (Cont'd)

CYQR

SERVICES	Call out chg may be levied for one or more svcs
FUEL	100LL, JA-1 (FSII avbl), SP, HPR 12-04Z
OIL	All
S	1,2,3,4,5,6
ARFF	DESIGNATED CAT 7
SUP FL	D & A-ice, LPOX
JASU	CE16, Air start
PVT ADV	KREOS Aviation 122.725 306-924-8910 10-04Z O/T 1 hr PN, call out chg. Regina Flying Club 306-525-6194 14-24Z Sep 1-May 31, 14-03Z Mon-Fri 14-24Z Sat-Sun Jun 1- Aug 31.
MIL CON	Executive Flight Centre 306-517-5223
RWY DATA	Rwy 13(128°)/31(308°) 7901x150 ASPH Rwy 08(080°)/26(260°) 6200x150 ASPH
RWY CERT	Rwy 13 RVR 1200(1/4sm)/Rwy 31 RVR 1200(1/4sm) AGN IV Rwy 08/26 AGN IV
TWY CERT	Twy C: AGN IIIB fr Twy B to Apron V & AGN II fr Apron V to Apron III
TWY	Twy C uncontrolled due ltd TWR vis. Twy C btwn Apron V and Apron III rstd to acft less than 24m (78').
APRON	Apron I rstd to sked commercial tfc only. Exceptions require prior appr of aprt opr. Apron II posn 1 rstd to commercial tfc only. Exceptions require prior appr of aprt opr. Apron III single row prkg only. Apron IV rstd to acft under 5,000 lbs.
RCR	Opr 306-761-7550 AMSCR/CFRI avbl H24 Nov 1-Mar 31, 1300-2130Z Mon-Fri exc hols Apr 1-Oct 31 O/T 2 hr PN PLR/PCN
LIGHTING	08-AO(TE HI) P2, 26-AO(TE HI) P2, 13-AN(TE HI), 31-AO(TE HI) P2
COMM	
RADIO	118.6 PTC avbl (E) 04-12Z (emerg only 306-359-5018)
RCO	Edmonton rdo 123.55 (FISE) 126.7 (bcst)
ATIS	127.0
GND	121.9 12-04Z
TWR	118.6 (E) 12-04Z (emerg only 306-359-5013)
MF	rdo 118.6 5NM 5000 ASL (CAR 602.98) 04-12Z
PAL	Winnipeg Ctr 120.1 123.8
NAV	
NDB	QR 290 (L) N50 22 10 W104 34 22 FINDLAY ZQR 204 (L) N50 25 44 W104 31 38 AJAX ZRS 219 (L) N50 29 07 W104 44 10
VORTAC	LUMSDEN VLN 114.2 Ch 89 N50 40 01 W104 53 23 (1895')
DME	YRX 115.0 Ch 97 N50 26 14 W104 40 15 (1916')
ILS	IQR 109.5 (Rwy 13) RVR LOC reliable only within 10° either side of centreline.

SASKATCHEWAN

AERODROME/FACILITY DIRECTORY

REGINA INTL SK (Cont'd)

CYQR

PRO

Pilots should refer to Canadian Airport Charts (CAC) to obtain details on established hot spots, prior to operating on maneuvering areas. CAC are available for free on the NAV CANADA website.

Rgt hand circuits Rwy 08 & 13 (CAR 602.96).

RVO for Rwy 13/31: During ATC hours of ops, when vis is below 1/4sm and RVR is 1200 or above, one in/one out ops will be provided.

NOISE

NOISE ABATEMENT PROCEDURE: All acft. ATC assigned rwys will divert arr & dep from noise sensitive areas. When twr clsd & operational conds permit, arr on Rwys 08 or 13, dep on Rwys 26 or 31. See CAP.

ATS PPR REQUIREMENTS: Ctc Winnipeg ACC 204-984-5979 for IFR tng and photo survey within Regina Class E Transponder Airspace.

CAUTION

Ozone research radiosonde balloon flt fr N50 12 10 W104 42 45 (13.9NM S airport), max alt 115,000 MSL. Launches at 1715Z every Wed wx permitting, otherwise launches Thu or Fri at 1715Z. High sfc winds will delay release to 2315Z Wed, Thu or Fri. Inst package measures 20x20x26 cm, wt 1.2 kg, off-white 2 m dia balloon. Ascent rate 1000' per min, aprx ascent matrix:

10,000 MSL, launch + 8 min,
20,000 MSL, launch + 18 min,
30,000 MSL, launch + 28 min,
40,000 MSL, launch + 38 min,
50,000 MSL, launch + 48 min.

Stationary vertical green laser lgt beam projection from Observatory at N50 12 14 W104 42 47 (aprx 14NM S A/D). Beam diverges by factor of 10 with beam dia aprx 15' at 3280 AGL and aprx 30' at 6560 AGL abv lgt source. Laser lgt beam may be injurious to eyes within 5200' vertically of lgt source. Flash blindness could occur to 8600' ASL and cockpit illumination beyond this dist. Laser beam will be activated periodically in non-precipitation conds only.

Extv bird & wildlife activity in vic A/D.

SASKATCHEWAN

AERODROME/FACILITY DIRECTORY

REGINA GENERAL (HOSP) SK (Heli)

CRQ2

REF	N50 26 38 W104 36 05 Adj 9°E (2014) UTC-6 Elev 1981' A5006	
OPR	Saskatchewan Health Authority Protective Services 306-766-5999 Cert PPR	
PF	A-1,2,4 C-3,5,6	
FLT PLN	FIC Edmonton 866-WXBRIEF (Toll free within Canada) or 866-541-4102 (Toll free within Canada & USA)	
HELI DATA	FATO 86' dia non-supporting TLOF 57' dia CONC Safety Area 115' dia 17,000 lbs Max heli overall length 57.4'	
RCR	Opr	
LIGHTING	RY(LO)	
COMM	RADIO 118.6 04-12Z (emerg only 306-359-5018) RCO Edmonton rdo 123.55 (FISE) 126.7 (bcst) TWR 118.6 (E) 12-04Z (emerg only 306-359-5013) MF rdo 118.6 (E) 5NM centred on Regina Intl 2.6NM WSW 5000 ASL (CAR 602.98) 04-12Z PAL Winnipeg Ctr 120.1 123.8	
PRO	Arr/dep 046° fr heli (H1). Arr/dep btwn 189°-141° curved path (H1). Arr/dep btwn 189°-305° fr heli (H1).	
CAUTION	Stairwell penthouse apartment 108' N of heli marked. Elevator penthouse apartment 131' S of heli marked.	

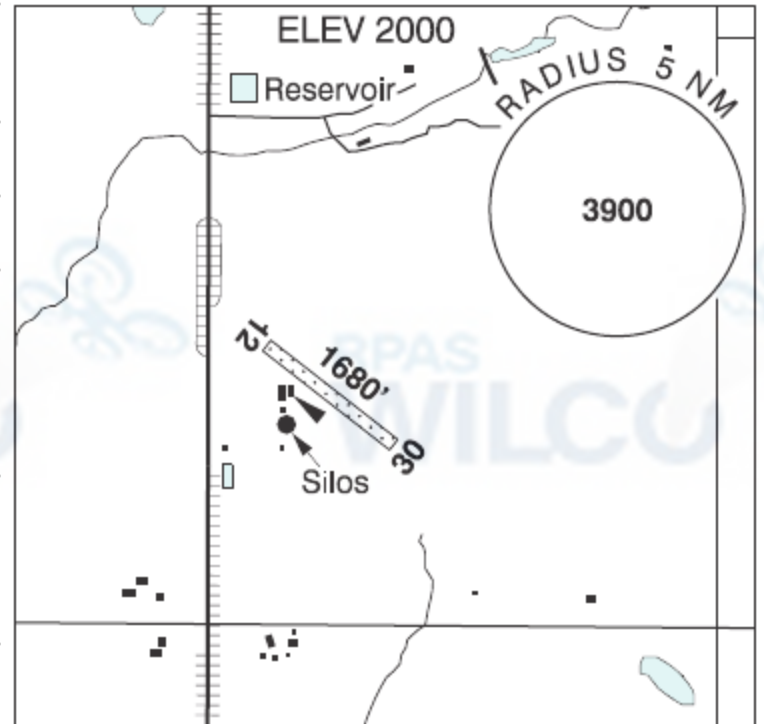
SASKATCHEWAN

AERODROME/FACILITY DIRECTORY

PILOT BUTTE SK

CPB5

REF	N50 27 40 W104 25 50 1SW 9°E (2015) UTC-6 Elev 2000' A5006
OPR	T. Truman 306-781-2303 Reg
PF	C-1,2,5 D-3,4,6
FLT PLN	FIC Edmonton 866-WXBRIEF (Toll free within Canada) or 866-541-4102 (Toll free within Canada & USA)
RWY DATA	Rwy 12(119°)/30(299°) 1680x65 GRASS
RCR	Ltd sum maint No win maint
COMM	ATF tfc 123.2 5NM 5000 ASL
CAUTION	Numerous obst/twr vic. Class E airspace abv 3000 ASL, see Regina VTPC.



SASKATCHEWAN

AERODROME/FACILITY DIRECTORY

REGINA / AEROGATE SK

CAG2

REF	N50 35 52 W104 36 04 6N 10°E (2011) UTC-6 Elev 1980' A5006	
OPR	Mike Reibling 306-352-3337 14-23Z Mon-Fri O/T 306-586-8679 Reg PPR	
PF	D-1,2,3,4,5,6	
FLT PLN		
FIC	Edmonton 866-WXBRIEF (Toll free within Canada) or 866-541-4102 (Toll free within Canada & USA)	
SERVICES		
FUEL	Opr 100LL Sat-Sun only Call out charge may apply	
RWY DATA	Rwy 11(105°)/29(285°) 1900x30 broken ASPH	
RCR	Opr Ltd maint. Ltd win maint.	
COMM		
ATF	tfc 123.2 5NM 4200 ASL	
CAUTION	Twrs 2671 ASL (607 AGL) 2NM NNE of A/D and 2.9NM on apch to Rwy 29 aprx 500 AGL.	